

**RFTN1 Antibody (Center)**  
**Affinity Purified Rabbit Polyclonal Antibody (Pab)**  
**Catalog # AP20321c****Specification**

---

**RFTN1 Antibody (Center) - Product Information**

Application	WB,E
Primary Accession	<a href="#">Q14699</a>
Reactivity	Human
Host	Rabbit
Clonality	Polyclonal
Isotype	Rabbit IgG
Calculated MW	63146
Antigen Region	169-198

**RFTN1 Antibody (Center) - Additional Information****Gene ID** 23180**Other Names**

Raftlin, Cell migration-inducing gene 2 protein, Raft-linking protein, RFTN1, KIAA0084

**Target/Specificity**

This RFTN1 antibody is generated from rabbits immunized with a KLH conjugated synthetic peptide between 169-198 amino acids from the Central region of human RFTN1.

**Dilution**

WB~~1:1000

E~~Use at an assay dependent concentration.

**Format**

Purified polyclonal antibody supplied in PBS with 0.09% (W/V) sodium azide. This antibody is purified through a protein A column, followed by peptide affinity purification.

**Storage**

Maintain refrigerated at 2-8°C for up to 2 weeks. For long term storage store at -20°C in small aliquots to prevent freeze-thaw cycles.

**Precautions**

RFTN1 Antibody (Center) is for research use only and not for use in diagnostic or therapeutic procedures.

**RFTN1 Antibody (Center) - Protein Information****Name** RFTN1**Synonyms** KIAA0084

**Function** Involved in protein trafficking via association with clathrin and AP2 complex (PubMed:[21266579](#), PubMed:[27022195](#)). Upon bacterial lipopolysaccharide stimulation, mediates internalization of TLR4 to endosomes in dendritic cells and macrophages; and internalization of poly(I:C) to TLR3-positive endosomes in myeloid dendritic cells and epithelial cells; resulting in activation of TICAM1-mediated signaling and subsequent IFNB1 production (PubMed:[21266579](#), PubMed:[27022195](#)). Involved in T-cell antigen receptor-mediated signaling by regulating tyrosine kinase LCK localization, T-cell dependent antibody production and cytokine secretion (By similarity). May regulate B-cell antigen receptor-mediated signaling (PubMed:[12805216](#)). May play a pivotal role in the formation and/or maintenance of lipid rafts (PubMed:[12805216](#)).

#### Cellular Location

Cell membrane; Lipid-anchor. Cytoplasm. Membrane raft. Endosome. Early endosome.  
Note=Translocates from cytoplasm to cell membrane where it colocalizes with poly (I:C) and then moves to endosomes where it colocalizes with TLR3 (PubMed:21266579) Translocates from cytoplasm to cell membrane where it colocalizes with TLR4 and then together with TLR4 moves to endosomes, upon lipopolysaccharide stimulation (PubMed:27022195)

#### Tissue Location

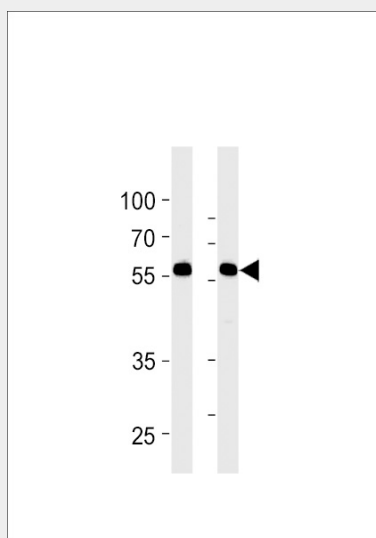
Expressed in B-cells (at protein level) (PubMed:12805216). Expressed in dendritic cells and macrophages (PubMed:21266579, PubMed:27022195).

### RFTN1 Antibody (Center) - Protocols

Provided below are standard protocols that you may find useful for product applications.

- [Western Blot](#)
- [Blocking Peptides](#)
- [Dot Blot](#)
- [Immunohistochemistry](#)
- [Immunofluorescence](#)
- [Immunoprecipitation](#)
- [Flow Cytometry](#)
- [Cell Culture](#)

### RFTN1 Antibody (Center) - Images



RFTN1 Antibody (Center) (Cat.# AP20321c) western blot analysis in MDA-MB-231,NCI-H460 cell

line lysates (35ug/lane). This demonstrates the RFTN1 antibody detected the RFTN1 protein (arrow).

**RFTN1 Antibody (Center) - Background**

May play a pivotal role in the formation and/or maintenance of lipid rafts. May regulate B-cell antigen receptor-mediated signaling.